

13X13FT

Overall Peak Height
12' 9" (388cm)



Entrance Height
7' 1" (215cm)

Pack Size (L x W x H)
16.5 x 17.3 x 81"

E1 13X13FT CANOPY TENT

Equip your commercial-grade Ecotent with your option of tent fabrics and customization options. Your Ecotent Product Expert can assist with any questions, pricing, and product support.

QUICK LINKS:

[Ecotent Website](#)

[3D Tent Configurator](#)

[Tent Sizes](#)

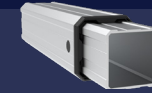
[Photo Gallery](#)

[Technical Details](#)

[Warranties & Certificates](#)

TECHNICAL DETAILS

E1*



Frame Construction

Frame Material	Aluminum
Leg Shape	Ribbed Square
Leg Profile	46x56.5mm (2.5mm)
Truss Profile	30x15mm (2.8mm)
Connecting Elements	Aluminum + Rubber Protectors
Footplate Material	Anodized Aluminum
Push-Button Locks	✓ Comfort Press
Corner Brackets	✓ Fixed Position

Weight

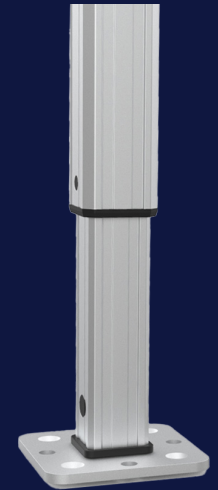
88.2lbs (40.1kg)

Transport Bag

✓ Heavy-Duty PVC

Frame Height Extensions

✓ Up to 36"



E1 TEXTILE OPTIONS

Oxford 500D, Oxford 250D, Oxford 250D NFR* & Recycled Fabric NFR*

*NFR: Non-Fire Rated. All fabrics are certified fire-retardant unless labeled as NFR.

TEXTILE PROPERTIES

	OXFORD 500D	OXFORD 250D
Waterproof Rating (DIN EN 20811)	✓ 2x Industry Avg. 2,000mm	✓ 1.5x Industry Avg. 1,600mm
Fire Certifications B - s1, d0 (difficult to ignite)	NFPA 701, CPAI-84 Sec.6, EN 13501-1:2019, CAN/ULC-S109, CA Title 19 Sec. 1237	
Color Fade Resistance (DIN EN ISO 105-B02)	Durable blue scale: 4.5-6.5 of 8	Durable blue scale: 4.5-6.5 of 8
Printing Options	✓ Thermal & Full	✓ Thermal & Full

FABRIC COLORS

